

## Springwood Heath Primary School

'Success through Caring and Learning'

Friday 19<sup>th</sup> April

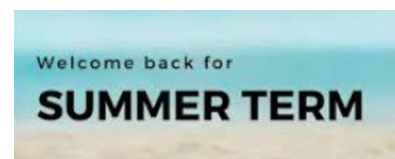


### Introduction

Welcome Back to school for the summer term. This is a very busy term with lots of events taking place as the children finish their current academic year and prepare for transition into their next class. The term is packed with assessments, parent assemblies, leavers events and FOSH (Friends of Springwood Heath) events and we are looking forward to experiencing it all with you so please keep an eye on the dates page at the bottom.

As we move into the summer term, we will begin to experience warmer weather (hopefully!) Please can you ensure that you send your child to school with a water bottle daily and if warm weather is forecast, wearing sun cream and an appropriate sun hat.

Mrs Costello  
Headteacher



### Parent Survey Results

We were all really impressed and thankful for all of your kind comments and feedback on our recent parent survey. Thank you for taking the time to complete this.

#### **Some of the positive comments included:**

*"I like that the school is starting to foster a sense of community among the parents, I like that the teachers and head teacher are approachable."*

*"Staff care about the children. It is a small, cozy school that nurtures them during their early years"*

*"It's welcoming and inclusive."*

*"It's friendly. The teachers care about the children and make lessons fun. The new cashless system & afterschool provision are welcomed."*

*"Absolutely the best school around here!"*

*"The vast majority of staff are wonderful, supportive and kind people. Response time for emails is very good. The SEND coffee mornings are fab"*



You Said...	We did....
More information about what the children are doing in school, learning about, curriculum etc.	The knowledge organisers that the children use in their lessons will be sent home to parents at the beginning of every half term (starting today.) You can use these to prepare your child for lessons, quiz them on their learning or as a talking point around the dinner table!
A wider range of fun activities at Christmas time	This will be an agenda item at future FOSH meetings. Please come along if you have any specific thoughts/ideas. We will be planning for events in the Autumn term.
Support and communication for transition into next year	We have planned in two whole school transition afternoons in July when each class will spend an afternoon in their new class with their new teacher. In addition, we have arranged professionals transition meetings between previous and new teacher, headteacher and SENCO to ensure all information is passed on. (July) Some children will have individual transition booklets developed if they require further transition support. (July) Parents with children in the ERP will have an end of year 1:1 with the SEND team to review progress this year and to clearly communicate provision for next year. (June/July)

### SEND Coffee Morning

We have our next SEND coffee morning on Monday morning at 9am. The ASD training team will be joining us. If you have a child with an Autism diagnosis, on the pathway or has some traits then do please come along for further information..

Our professionals – Mrs Yates (SENCO), Mrs Pendleton, Mrs Savage (Mental Health) will also be available if you want any advice or questions answering, please drop in.



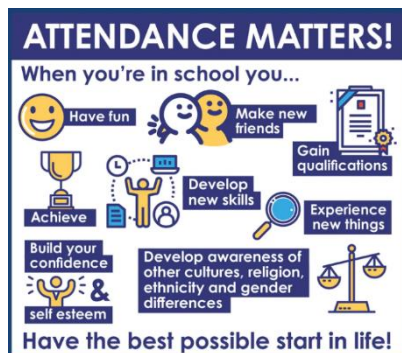
## Family Bingo – Friday 3<sup>rd</sup> May

The Friends of Springwood Heath are holding a fun family bingo event on Friday 3<sup>rd</sup> May at 3.30pm, everybody is welcome! Tickets are available from the school office and are priced at only £5 per family. Refreshments will be available on the night and there are some great prizes to win! Please do come along to support the school and help our community grow!



## Attendance this week

Reception	90.1%
Year 1	92.71%
Year 2	95.31%
Year 3	92.65%
Year 4	92.86%
Year 5	94.49%
Year 6	89.11%
Whole school	92.14%



## Dates for the Diary

Date	Event
Monday 22 <sup>nd</sup> April	SEND Coffee Morning - ASD Team Speaker
Wednesday 24 <sup>th</sup> April	Y5 Class Assembly - Y5 Parents invited 9am
Wednesday 1 <sup>st</sup> May	Y1 Class Assembly 9am Y1 parents invited
Thursday 2 <sup>nd</sup> May	Reception Class trip to Farmer Teds
Friday 3 <sup>rd</sup> May	Family Bingo - School Hall 3.30-5pm
Monday 6 <sup>th</sup> May	May Bank Holiday - School Closed
Monday 13 <sup>th</sup> - Thursday 16 <sup>th</sup> May	Y6 SATS week
Wednesday 22 <sup>nd</sup> May	Y4 Class Assembly 9am Y4 Parents invited
Thursday 23 <sup>rd</sup> May	School closes for half term
Friday 24 <sup>th</sup> May	INSET Day - School Closed
Monday 3 <sup>rd</sup> June	School reopens Summer 2
Monday 3 <sup>rd</sup> June-Friday 7 <sup>th</sup> June	Y4 Multiplication Check
Monday 11 <sup>th</sup> June-Friday 14 <sup>th</sup> June	Y1 Phonics Screening Check
Wednesday 12 <sup>th</sup> June	Y3 Class Assembly 9am Y3 Parents Invited
Monday 17 <sup>th</sup> -Friday 21 <sup>st</sup> June	Art and Design Festival
Thursday 20 <sup>th</sup> -Friday 21 <sup>st</sup> June	Y6 London Residential Trip
Wednesday 26 <sup>th</sup> June	Y4 Catalyst Museum Trip
Thursday 27 <sup>th</sup> June	Infants Sports Day 9.15am-11am
Thursday 27 <sup>th</sup> June	Juniors Sports Day 1.15pm-2.45pm
Friday 28 <sup>th</sup> June	Class Photographs

<b>Wednesday 3<sup>rd</sup> July</b>	Y6 Transition to Secondary School Day
<b>Monday 15<sup>th</sup> July – Wednesday 17<sup>th</sup> July</b>	Whole school transition afternoons (more information to follow)
<b>Thursday 18<sup>th</sup> July</b>	Y6 Leavers Performance 9.15am
<b>Thursday 18<sup>th</sup> July</b>	Y6 Leavers Party 4.30-6.30pm
<b>Friday 19<sup>th</sup> July</b>	School finishes for the summer break 1.30pm